
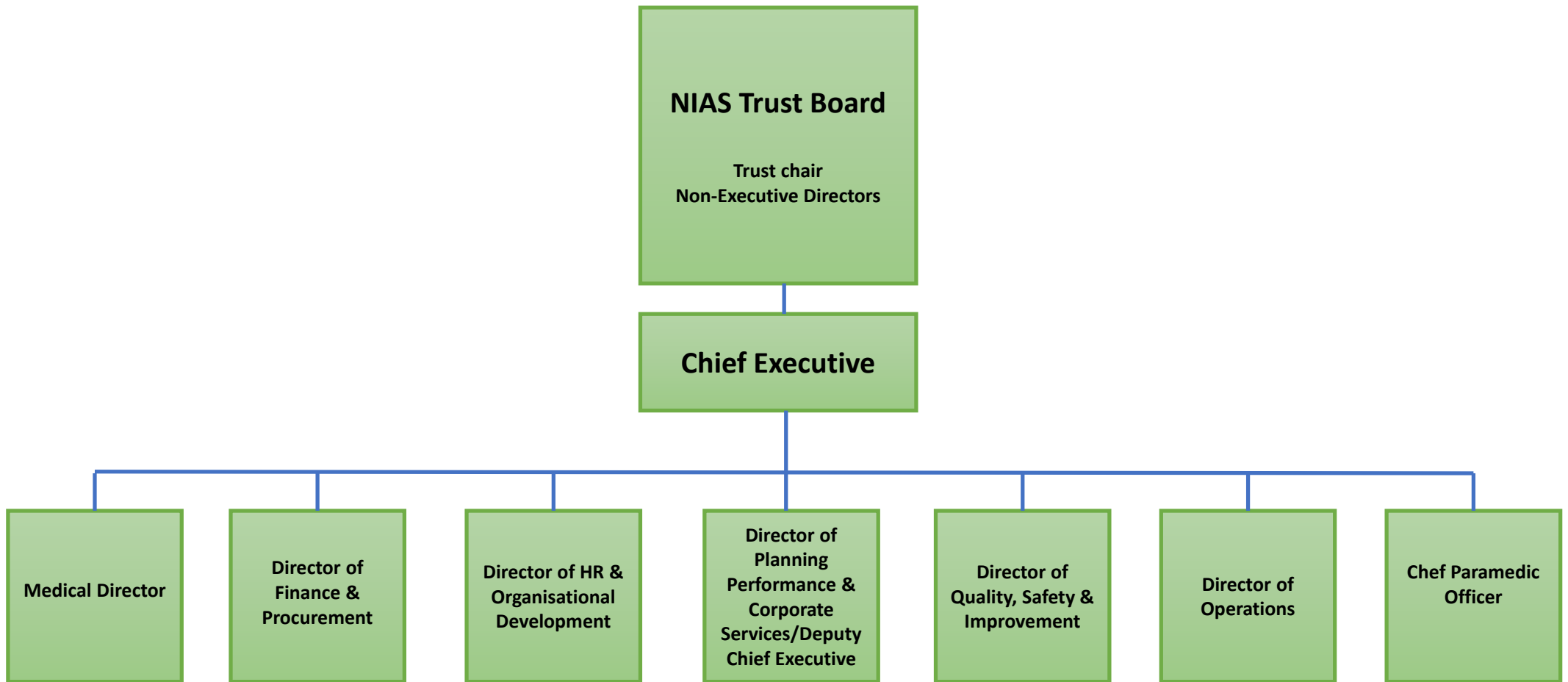



# NIAS Board & SMT



 Northern Ireland Ambulance Service  
Health and Social Care Trust



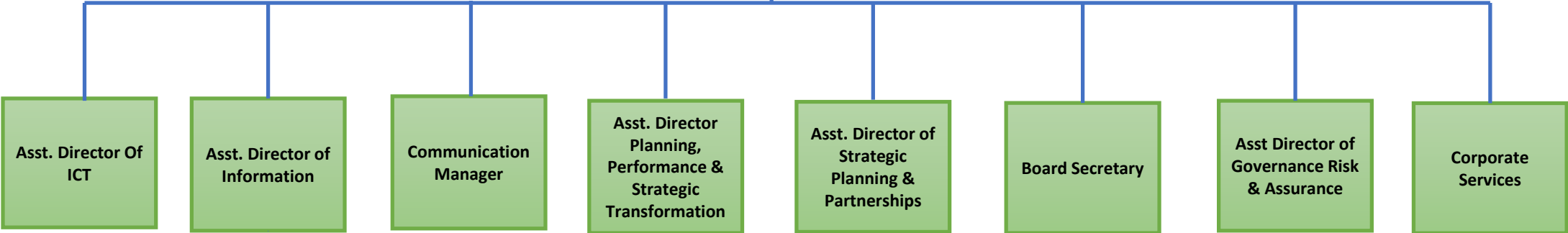


 Northern Ireland Ambulance Service  
Health and Social Care Trust

# Planning, Performance and Corporate Services

**Director of Planning, Performance and Corporate Services**

**Senior Secretary**



**Assistant Director Of  
Technology &  
Telecommunications**

**Cyber Security  
Manager (B7)**

**Telephony  
Manager (B7)**

**Network  
Manager (B7)**

**Network  
Manager (B7)**

**Business  
Support &  
Compliance PM**

**ePCR Technical  
Manager (B7)**

**Cyber Security  
Officer (B5)**

**Cyber Security  
(B6) Tactical**

**Cyber Security  
(B5) Tactical**

**Senior  
Technician  
(B6)**

**Senior  
Technician  
(B6)**

**Senior  
Technician  
(B6)**

**Senior  
Technician  
(B6)**

**ePCR  
Technician  
(B5)**

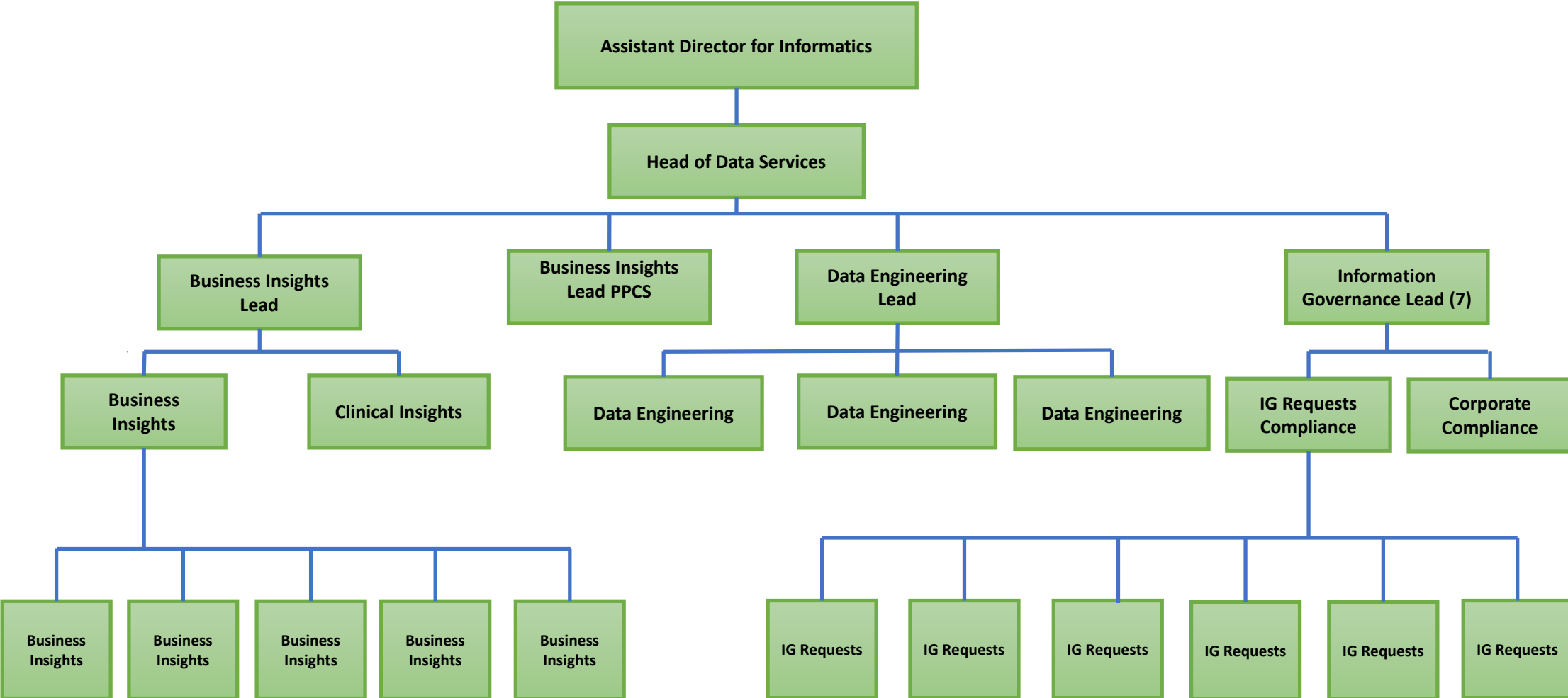
**Technician  
(B5)**

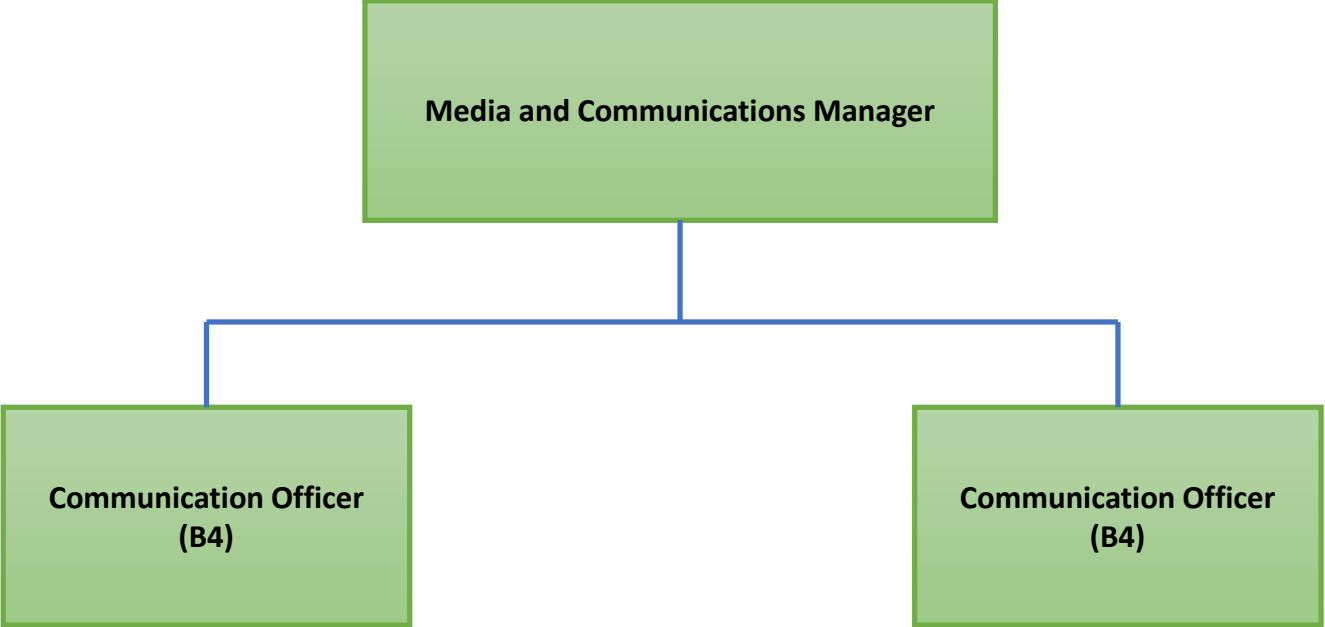
**Technician  
(B5)**

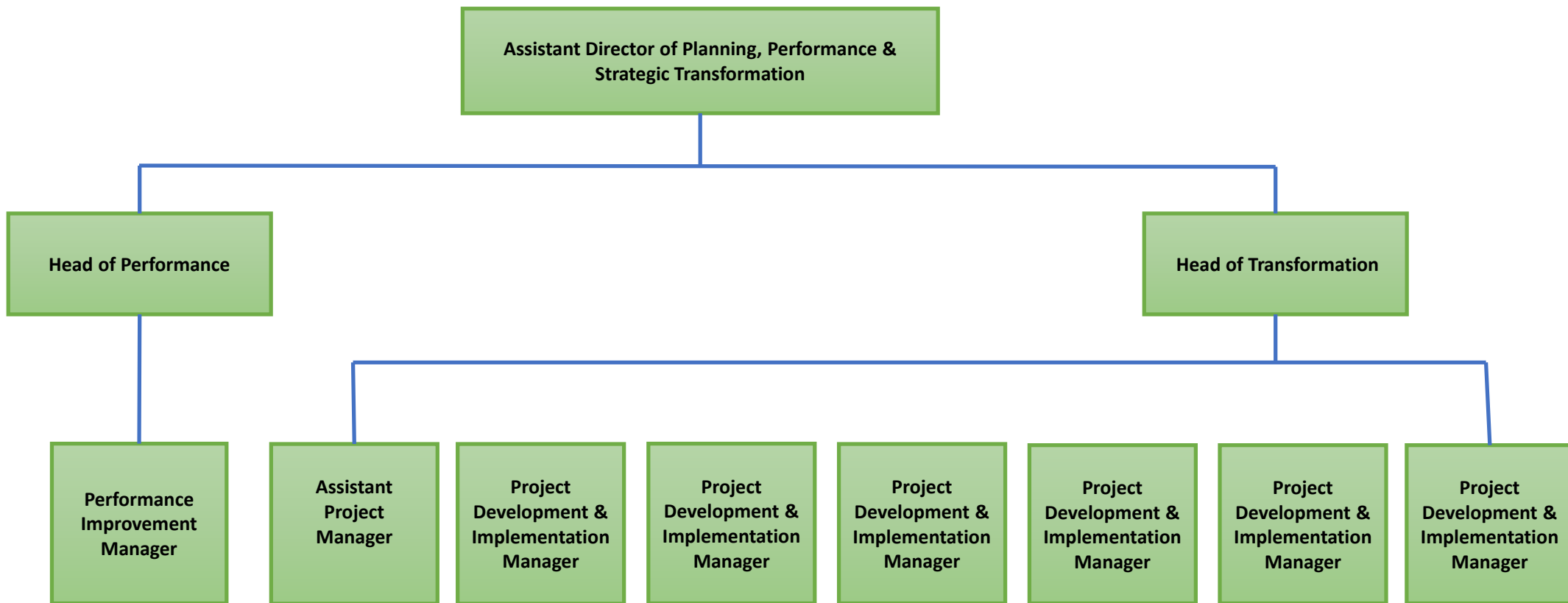
**Technician  
(B5)**

**Help Desk (B4)**

**Help Desk (B4)**



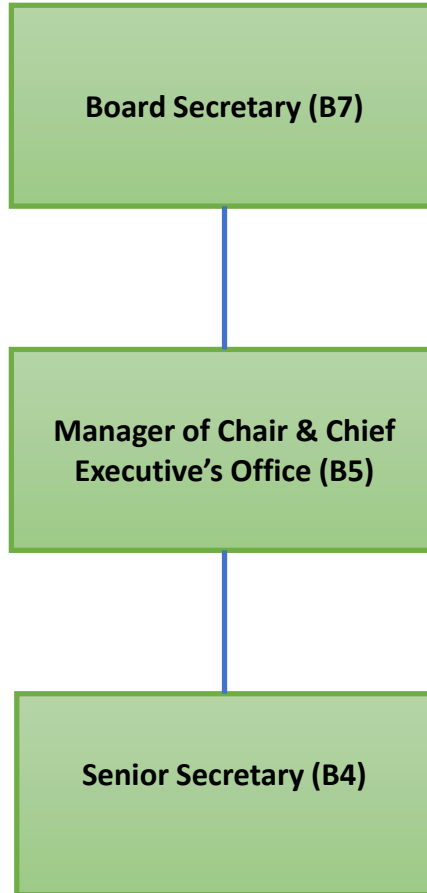


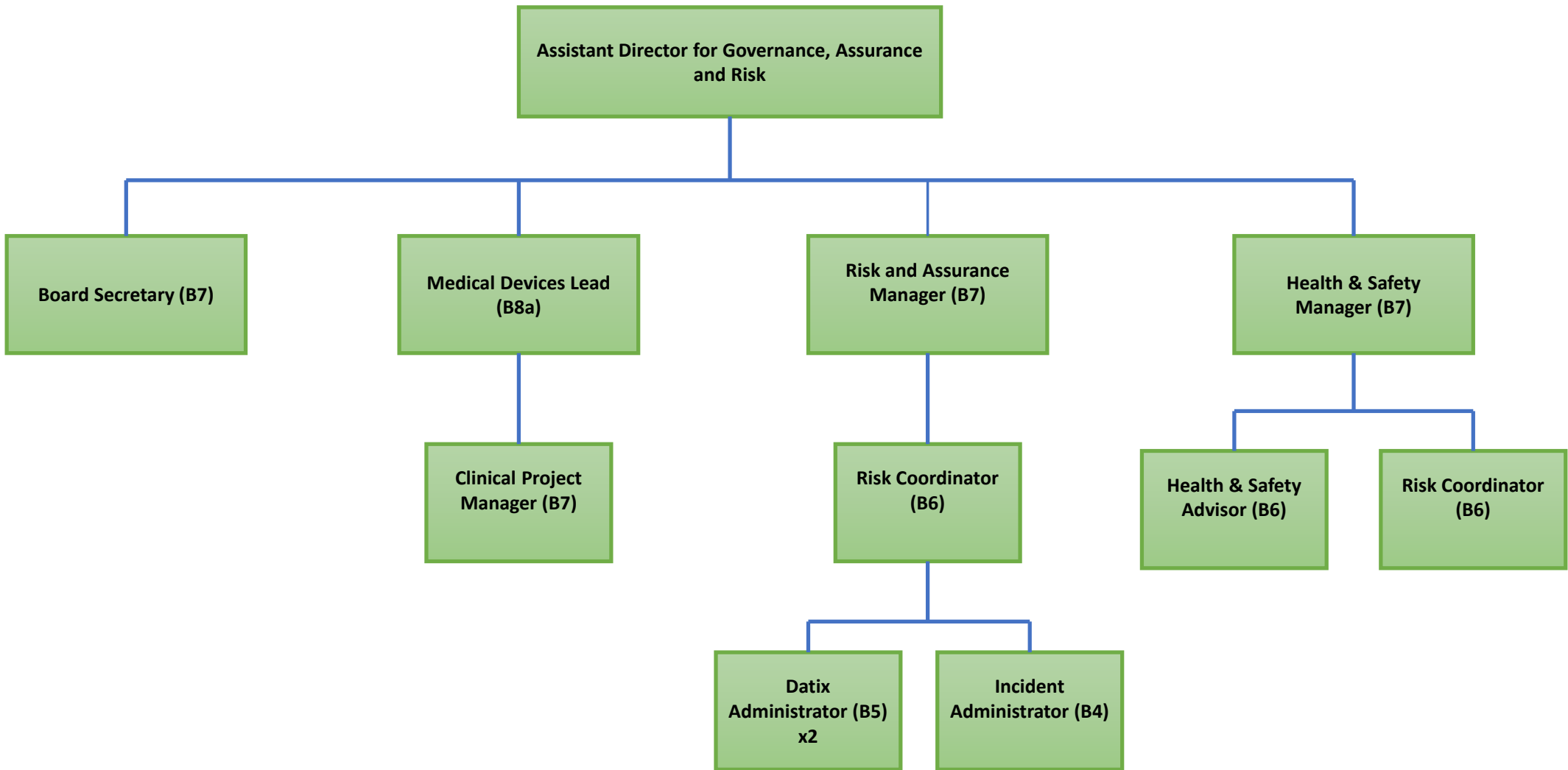


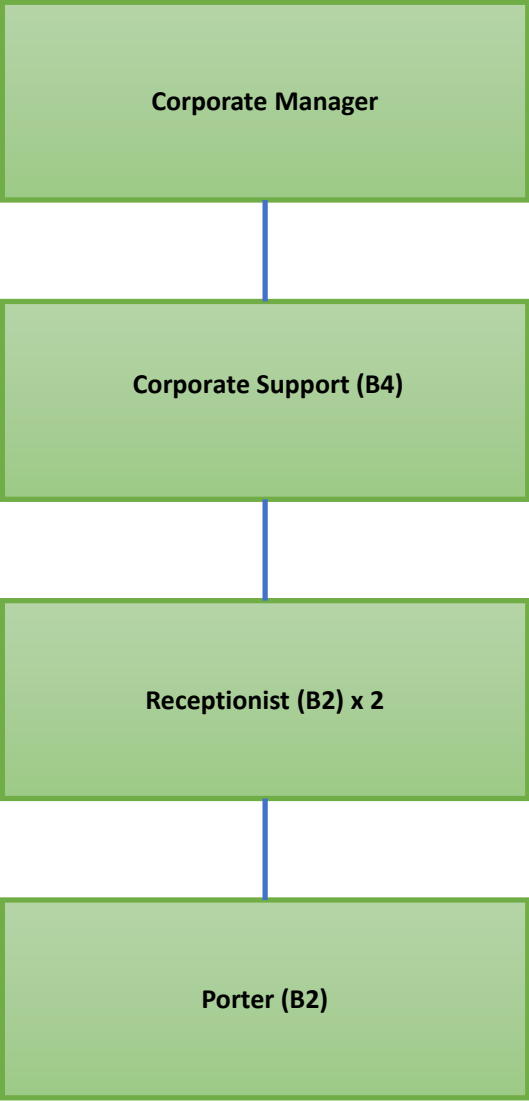
**Assistant Director of Strategic Planning  
& Partnerships**

**Project Development &  
Implementation Manager**

**Population Health Data & Policy  
Analyst**



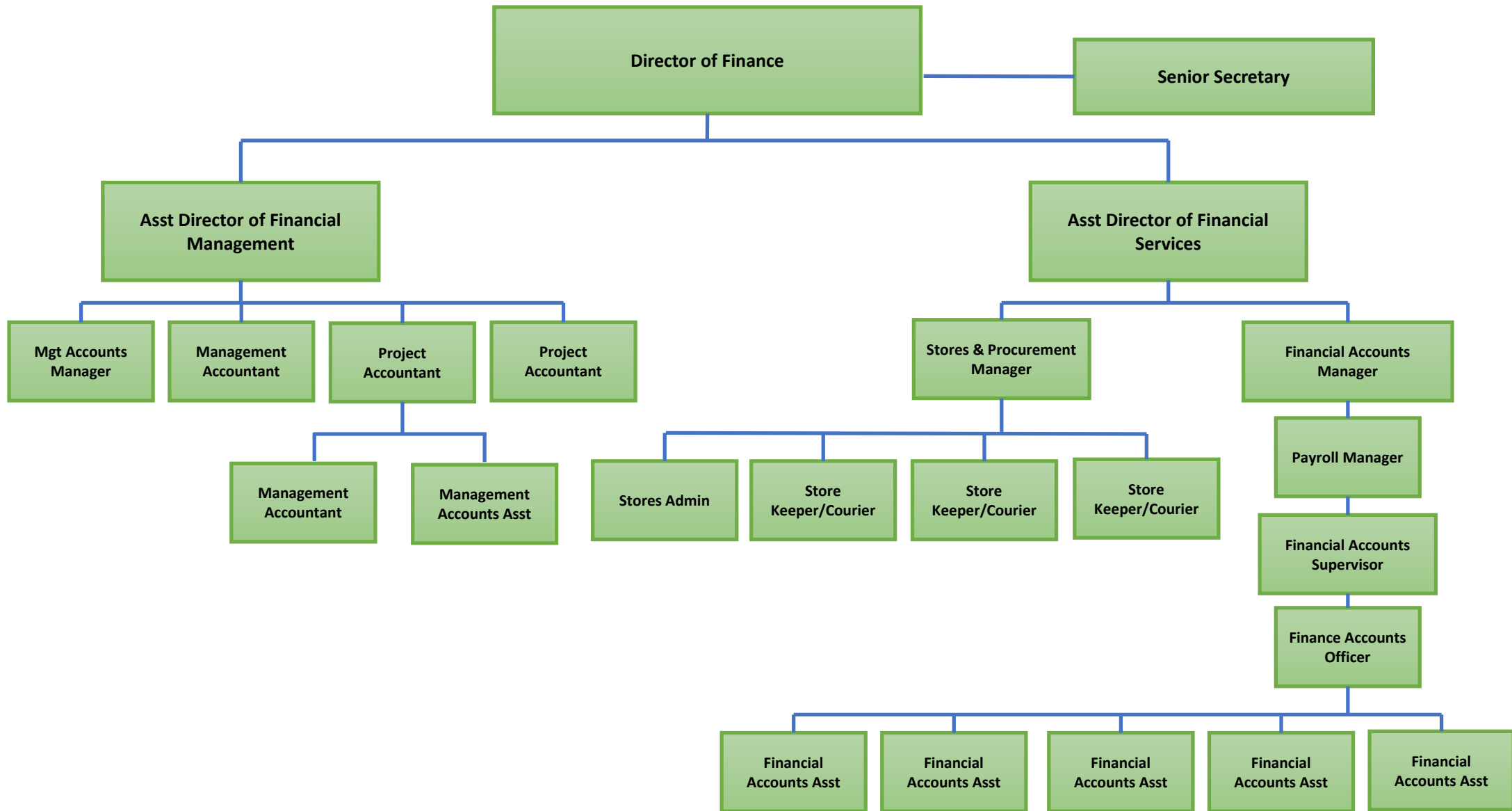






 Northern Ireland Ambulance Service  
Health and Social Care Trust

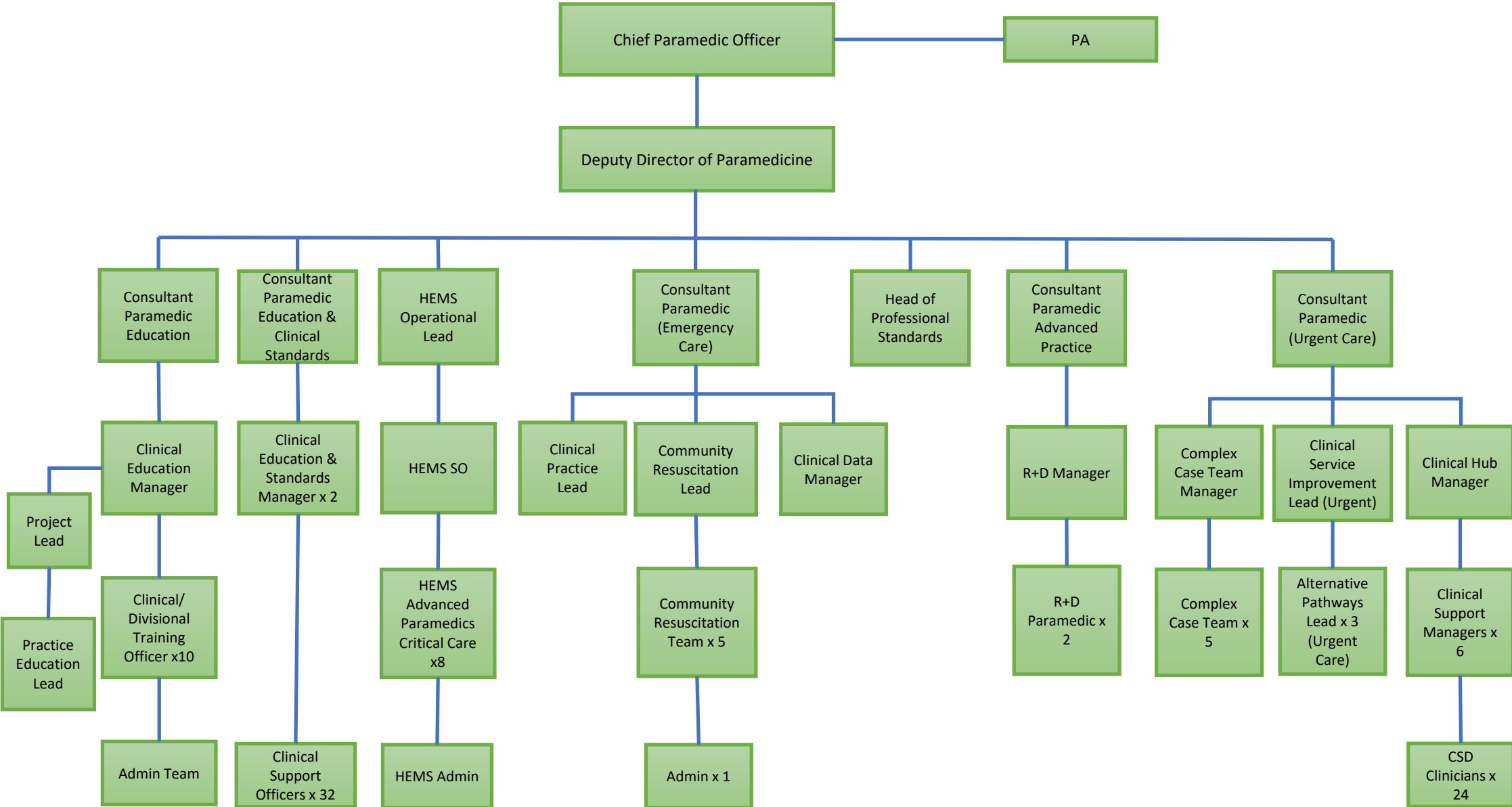
# Finance






HSC Northern Ireland Ambulance Service  
Health and Social Care Trust

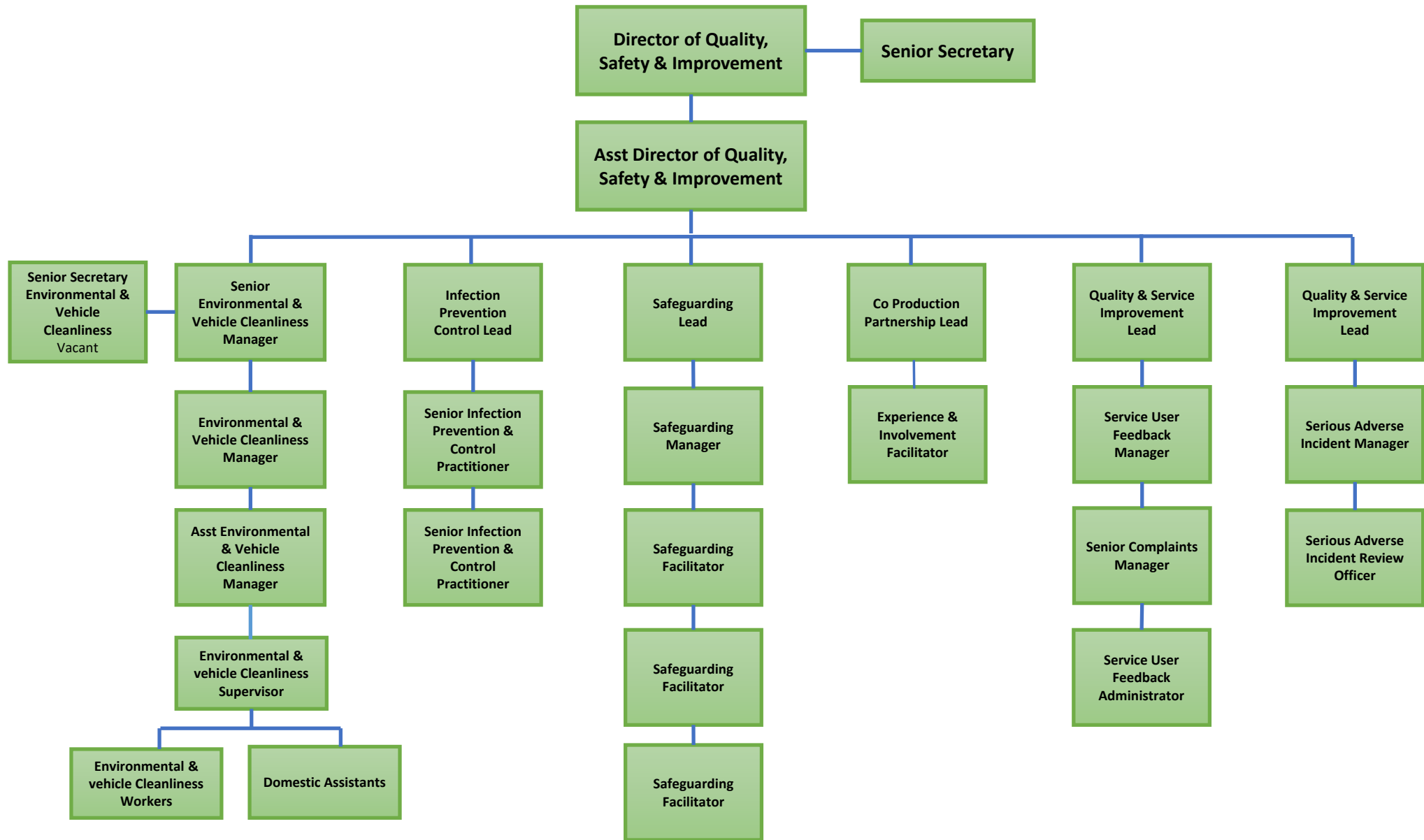
# Clinical Directorate



# Quality, Safety and Improvement (QSI)



 Northern Ireland Ambulance Service  
Health and Social Care Trust





 Northern Ireland Ambulance Service  
Health and Social Care Trust

# Operations

**Director of Operations**

**PA to Director of Ops**

**Operations  
Business &  
Performance  
Manager**

**Operations  
Business &  
Performance  
Manager**

**Assistant Director  
of Operations**

**Assistant Director  
of EPRR/HART**

**Assistant Director of  
Operations**

**Assistant  
Director of  
Operations  
Control &  
Communications**

**Assistant  
Director of  
Scheduled Care**

**Resource  
Management  
Centre**

**South  
Division**

**West  
Division**

**Belfast  
Division**

**North  
Division**

**South East  
Division**

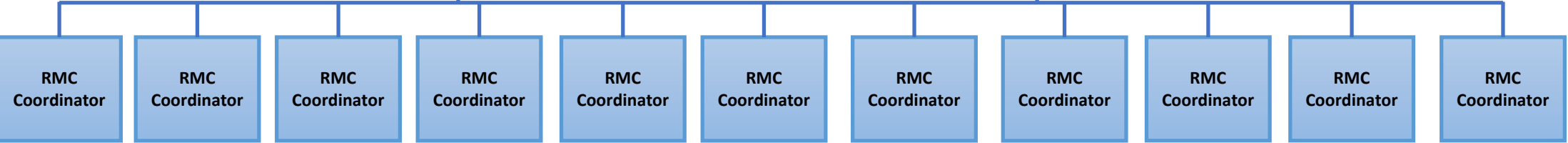
**Emergency  
Ambulance  
Control**

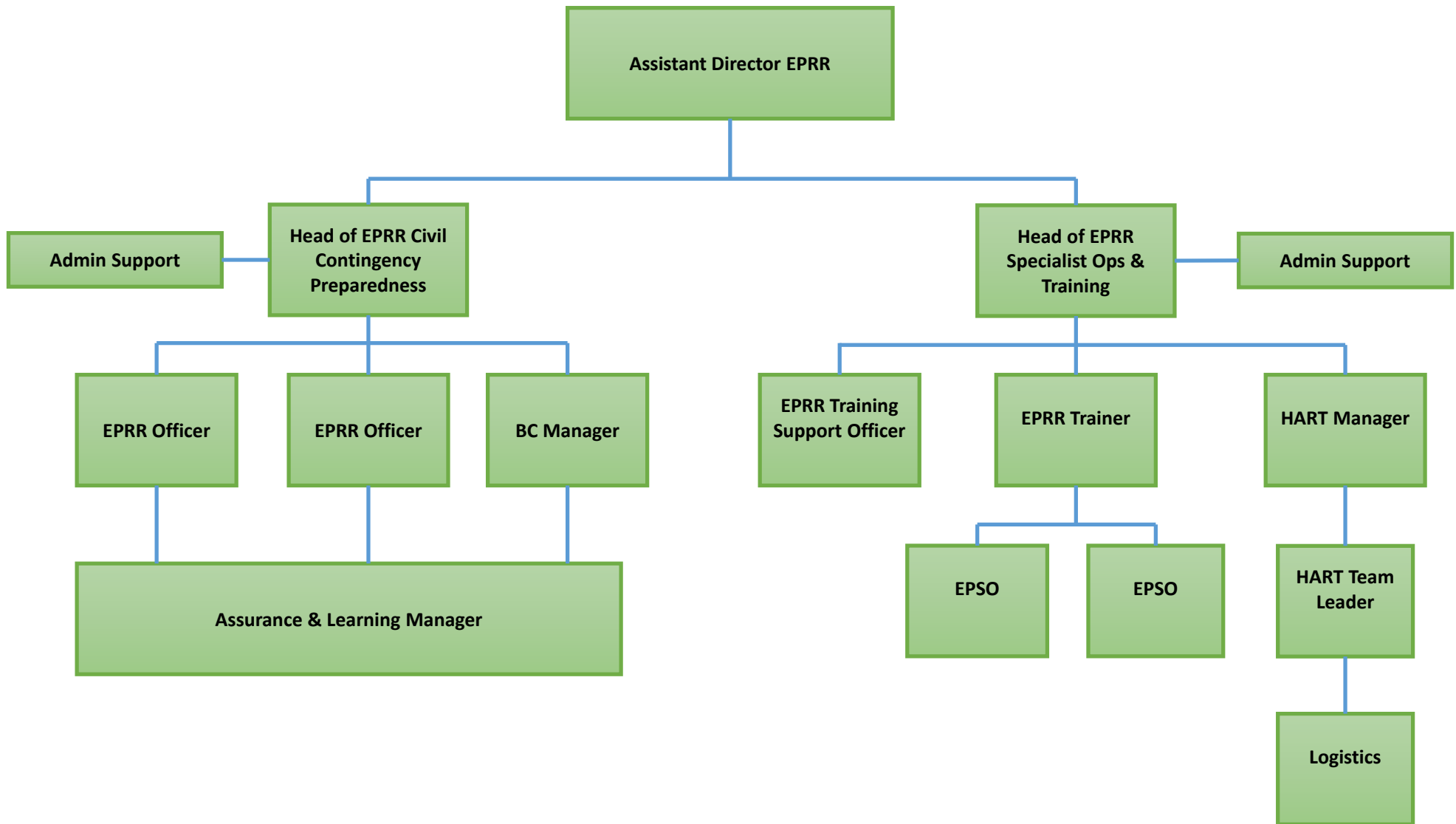
**Non  
Emergency  
Ambulance  
Control**

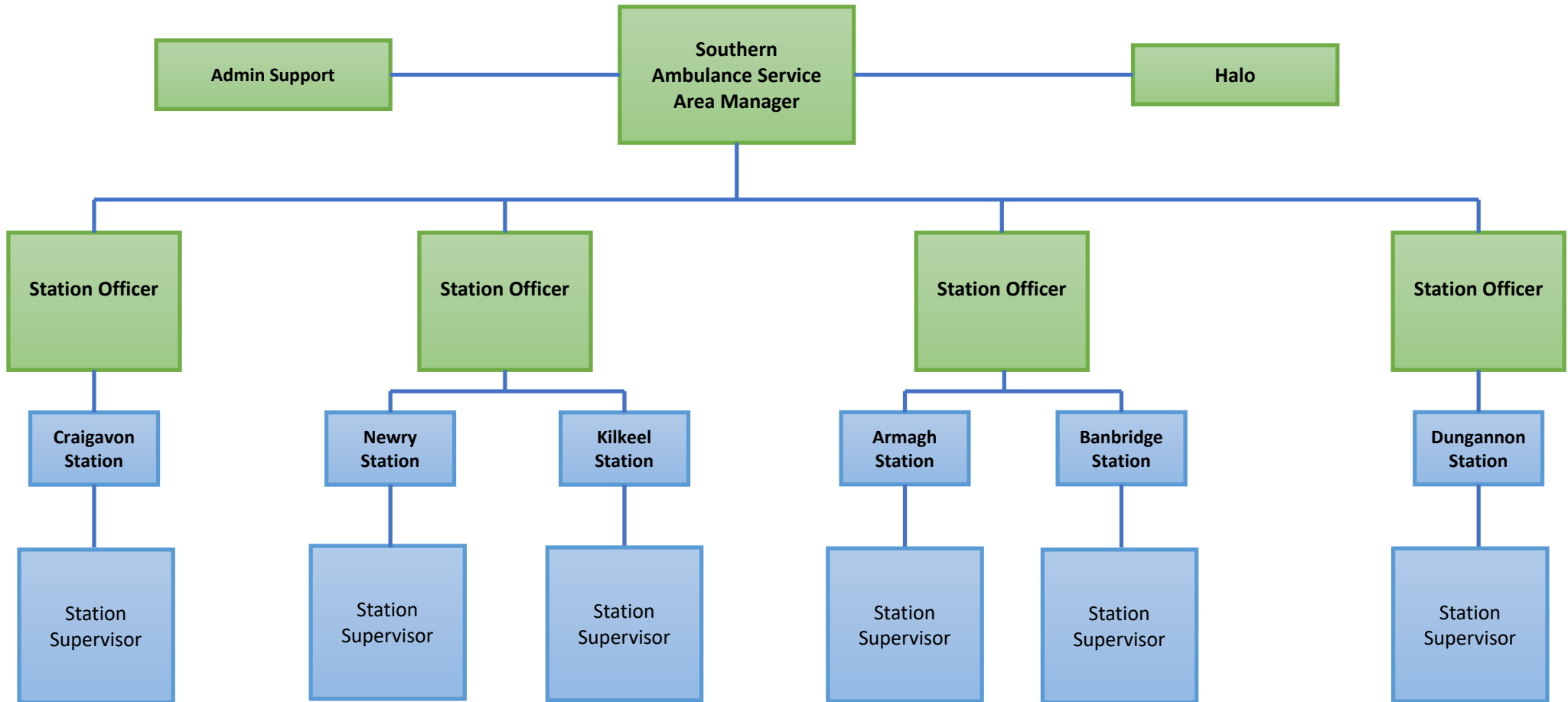
**Resource Management Centre  
Manager**

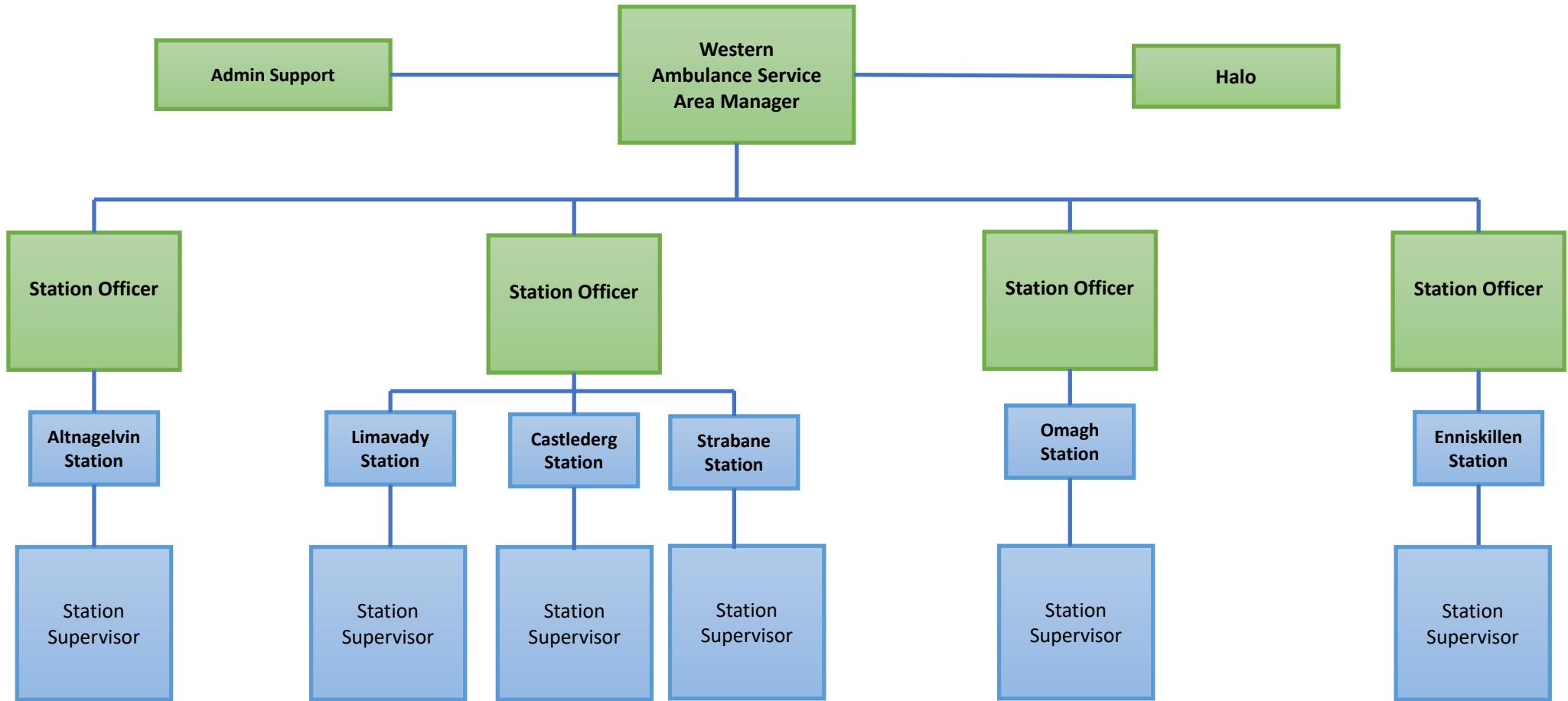
**RMC Supervisor**

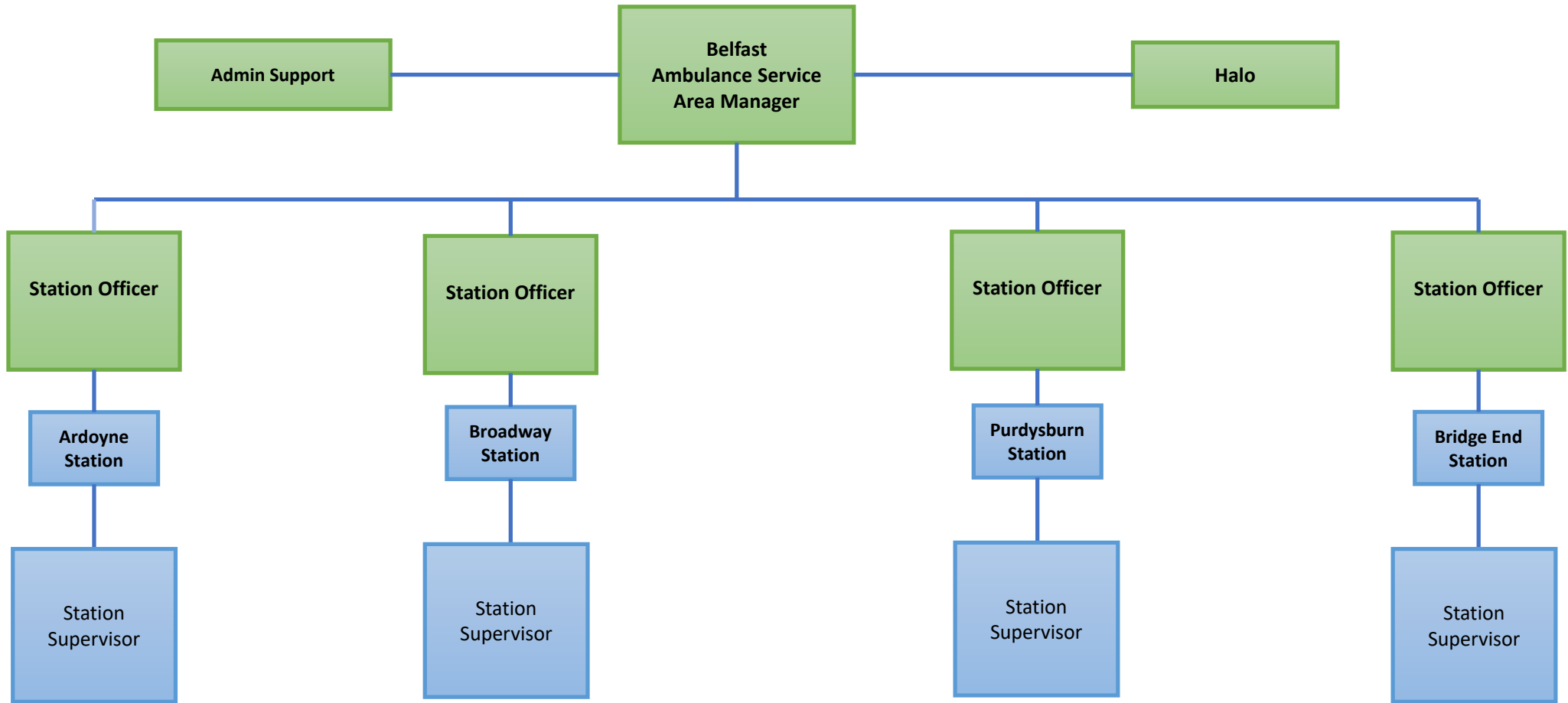
**RMC Supervisor**

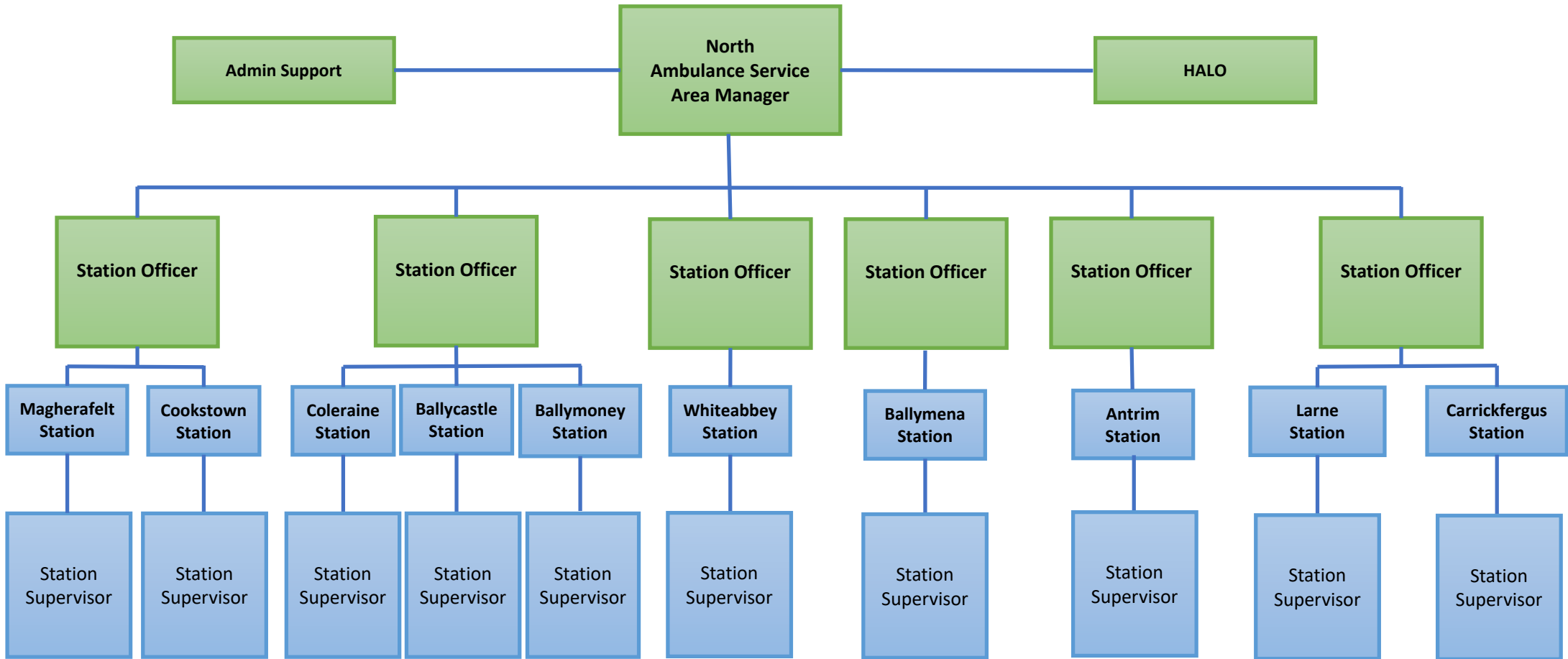


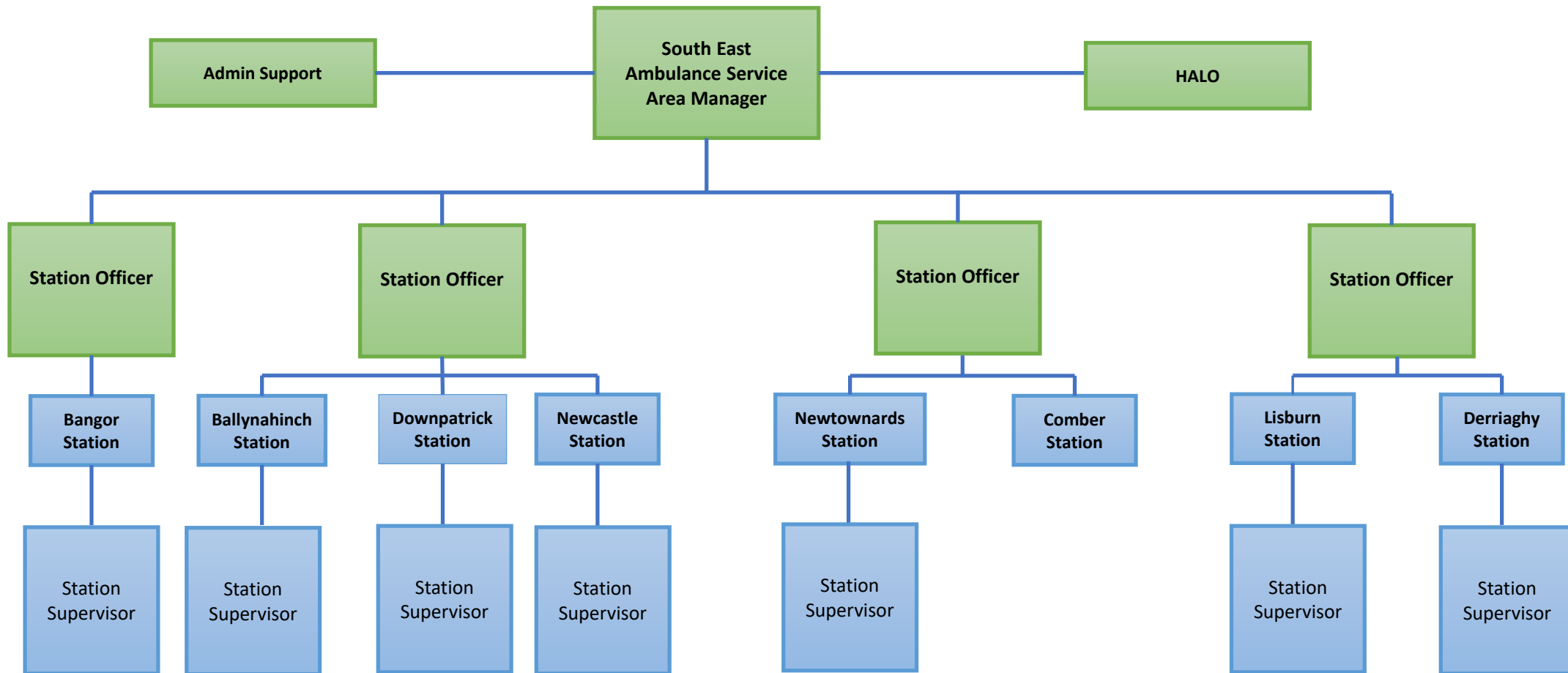








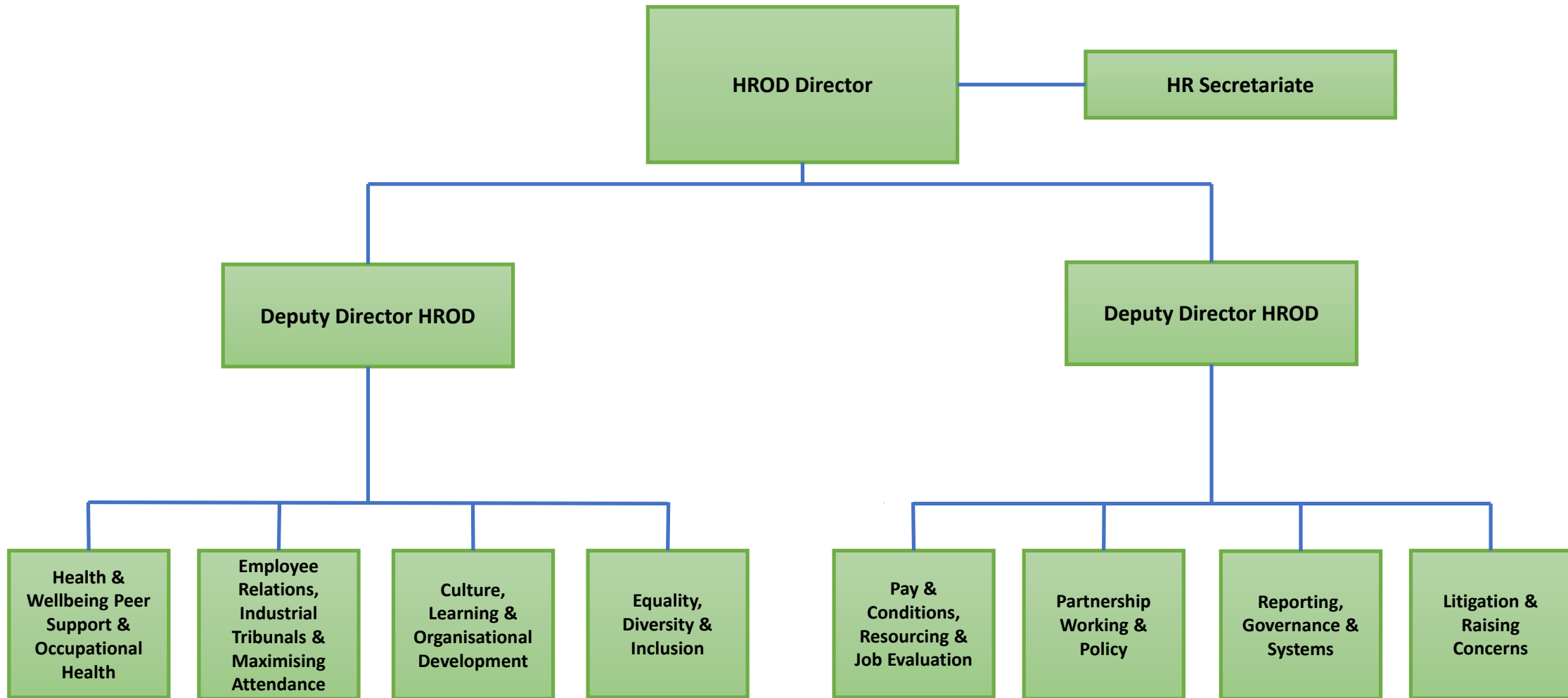






HSC Northern Ireland Ambulance Service  
Health and Social Care Trust

# Human Resources & Organisational Directorate





HSC Northern Ireland Ambulance Service  
Health and Social Care Trust

# Control & Communications

